

A smiling woman with glasses, wearing a white shirt, is looking at a tablet computer. She is in a meeting setting with other people in the background. The text 'YOUR ONE SOLUTION FOR' is overlaid on the left side of the image.

YOUR ONE SOLUTION FOR

BARS & RESTAURANTS

BROADCAST RADIO

BROADCAST TV

CASINOS

CINEMAS

CONVENTION CENTERS

CORPORATE

CRUISE SHIPS

eSPORTS

GOVERNMENT

HEALTHCARE

HIGHER EDUCATION

HOTELS

HOUSES OF WORSHIP

K-12/PRIMARY EDUCATION

KARAOKE

MUSEUMS

NIGHTLIFE

PERFORMING ARTS

PORTABLE PA SYSTEMS

RECORDING

RETAIL DESTINATIONS

STADIUMS & ARENAS

THEMED ATTRACTIONS

TOUR

TRANSPORTATION

THE HARMAN FAMILY

AKG MICROPHONES, HEADPHONES

AMX VIDEO SWITCHERS, NETWORKED AV ENCODERS AND DECODERS, COLLABORATION AND
CONFERENCING SYSTEMS, DEVICE CONTROL SYSTEMS, AV MANAGEMENT SOFTWARE

ESS DIGITAL SIGNAL PROCESSORS, AUDIO CONTROL

CROWN POWER AMPLIFIERS

dbx LOUDSPEAKER MANAGEMENT SYSTEMS, DIGITAL SIGNAL PROCESSORS, AUDIO CONTROL

JBL
PROFESSIONAL LOUDSPEAKERS, PORTABLE PA SYSTEMS, COMMERCIAL AMPLIFIERS, COMMERCIAL MIXERS

lexicon AUDIO EFFECTS HARDWARE AND SOFTWARE

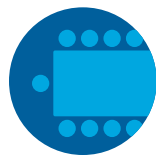
Martin STAGE LIGHTING FIXTURES, LIGHTING CONTROLLERS, ATMOSPHERIC EFFECTS,
ARCHITECTURAL LIGHTING FIXTURES, LED VIDEO DISPLAY SYSTEMS

Soundcraft MIXING CONSOLES, STAGEBOXES, RECORDING INTERFACES, EFFECTS PROCESSORS

STUDER MIXING CONSOLES, ROUTING AND I/O, WORKFLOW & AUDIO SOLUTIONS

ONE SOLUTION FOR ALL

HARMAN assists our corporate clients in harnessing the power of various, disparate technologies by ensuring they work reliably and cohesively, while allowing users to focus on communication rather than the technology tool they are using. Our goal is to help clients achieve their goals to make technology manageable and secure.



BOARDROOM



TRAINING THEATER



HALLWAY



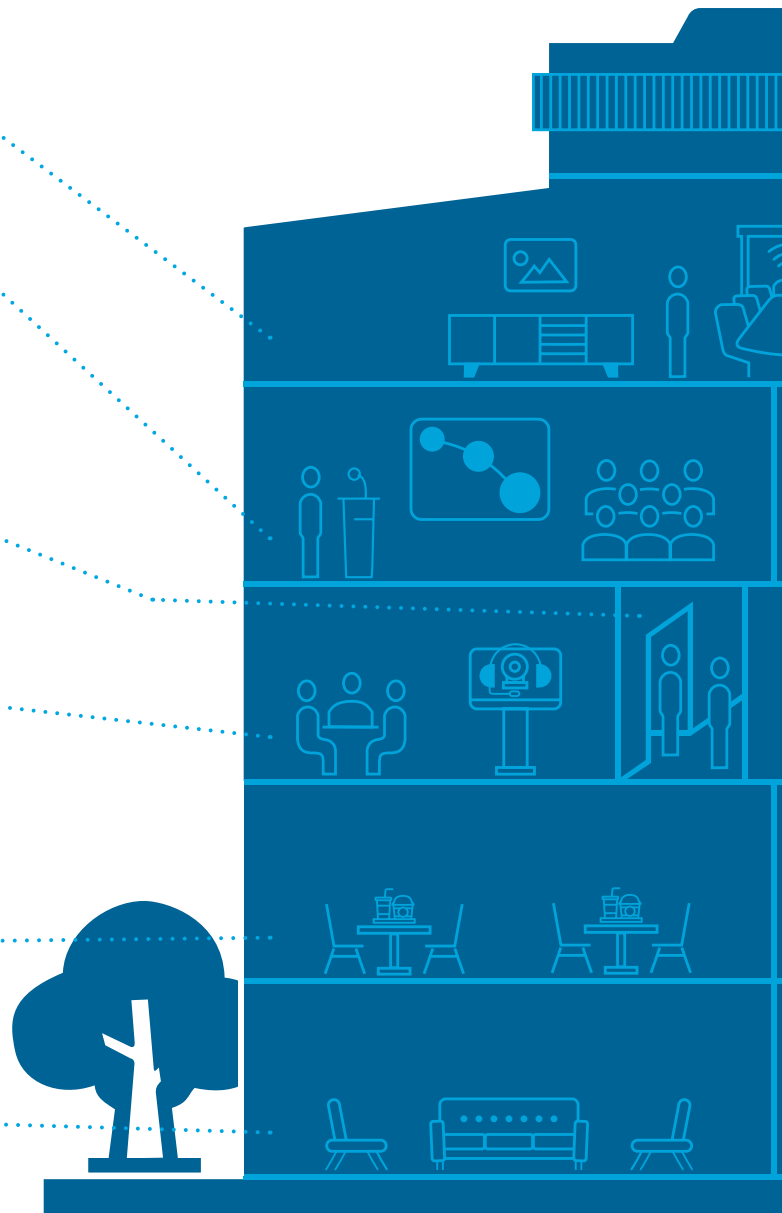
HUDDLE SPACE



CAFETERIA / MULTIPURPOSE



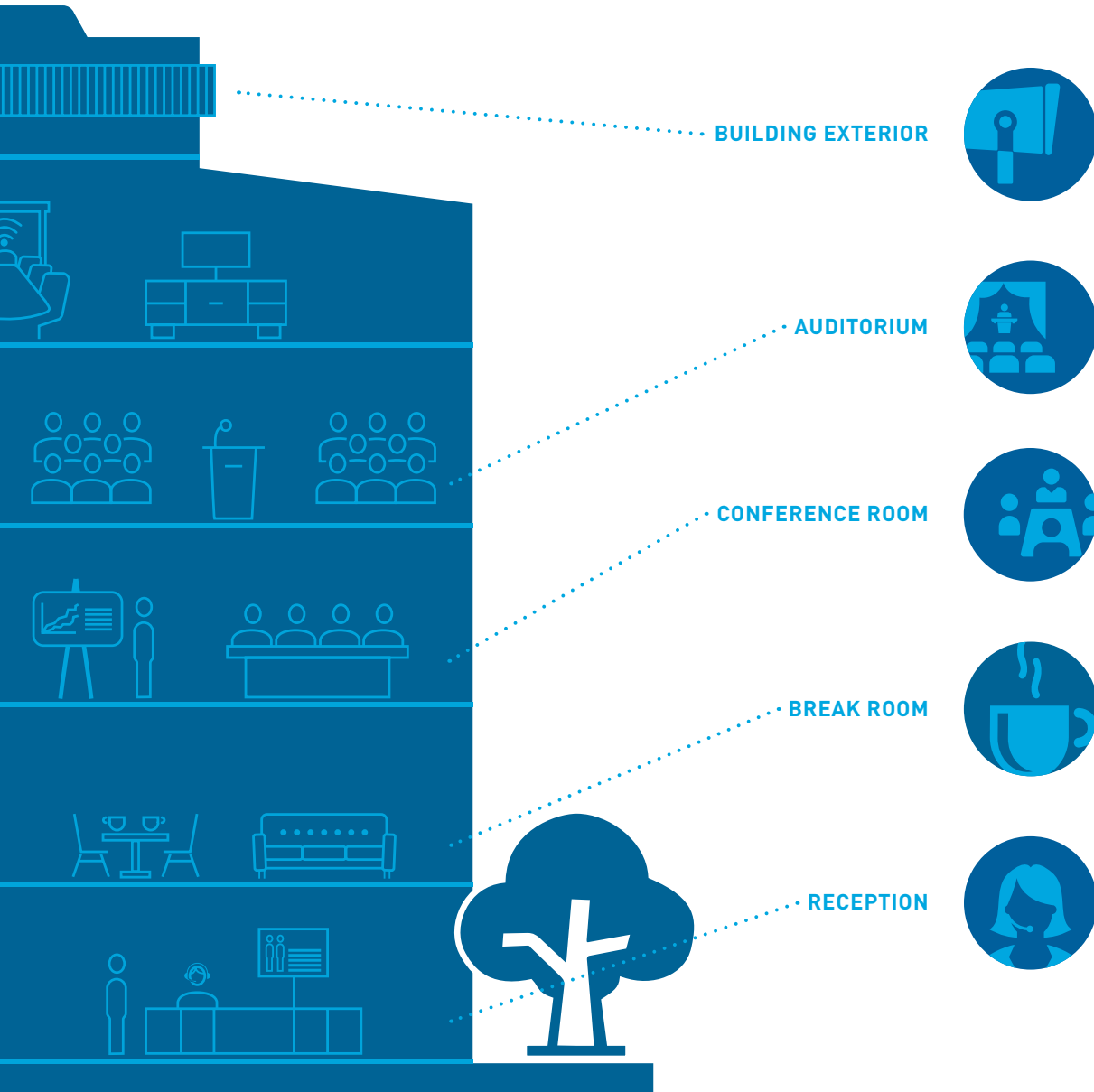
LOBBY



COMMON HARMAN APPLICATIONS IN CORPORATE SPACES

Meeting Room Automation
Collaboration and Conferencing
Video Signal Distribution
Audio Processing and Distribution

Loudspeakers and Sound Management
Digital Signage
Enterprise AV Asset Management
Architectural Lighting



CREATING PERFECTLY CONNECTED SPACES

HARMAN Professional Solutions is the world's largest professional audio, video, lighting, and control manufacturer. We are shaping the transformation of business through bold innovations that enable employees to achieve their objectives with simple-to-manage technology integrated into efficient, connected environments.



AUDITORIUM

Easy Presentations. Perfect Display.

An auditorium is capable of hosting hundreds of attendees, with events often live streamed and recorded for later use. HARMAN offers a complete solution for these spaces, including sound reinforcement, video distribution, professional lighting, and integrated system control.



BOARDROOM

Impress Top Clients With a Premium Experience

From senior leadership meetings to presentations with top partners, events in the boardroom are among the most important in the enterprise. HARMAN products combine elegant styling, the most advanced technical capabilities, and a simple yet intuitive interface.



ARCHITECTURAL LIGHTING

Attract and Illuminate

A building's architecture can impact customers before they even walk through the door by creating a strong visual experience that reinforces the company's brand. HARMAN lighting solutions enhance the existing architecture, transforming your business exterior into a work of art.



BREAK ROOM

Inform and Educate

Break rooms offers staff an opportunity to refresh and recharge while staying connected with the company. Communicate with your employees with integrated digital signage and live TV that informs and educates while providing entertainment that renews energy and spurs innovation.



CAFETERIA / MULTIPURPOSE

High Impact at a Low Cost

Cafeterias are where your staff eats lunch, catches up on the day's news and chats with co-workers. However, these spaces must serve other needs, including presentations, parties and client events. HARMAN technology converts this space into a flexible and versatile multipurpose space.



CONFERENCE ROOM

Present - Collaborate - Share

The conference room is the heart and soul of your business. HARMAN provides the right mix of technology to maximize meeting time and empower effective collaboration, including the ability to present content from any source and collaborate with participants across the globe.



RECEPTION / LOBBY

Connect With Your Guests

A clear sense of corporate identity is critical to instilling the right level of professionalism and brand reinforcement. HARMAN lobby and reception solutions help you make a welcoming first impression with digital signage, architectural lighting, live TV, and background music.



HALLWAY

Reach Employees Where They Are

Employees and visitors travel hallway spaces every day on the way to meetings, returning to their desks, or going to meet with a client. With HARMAN technology, you can deliver both marketing and employee-focused messages using digital signage and public address systems.



TRAINING THEATER

Instruct Your Global Workforce

These spaces serve high-capacity training classes with the ability to include remote participants. HARMAN technology improves collaboration and class participation by allowing instructors and students to share information from laptops, tablets, and mobile devices.



HUDDLE SPACE

Collaboration In An Instant

Designed to enable effective, small-group collaboration, huddle spaces allow effortless viewing and sharing of content, no matter the source. HARMAN technology allows employees to quickly collaborate with colleagues in the room and around the world.

WORLDWIDE SOLUTION SUPPORT

HARMAN HAS SALES OFFICES AROUND THE GLOBE READY TO HELP

Wherever you are, you can always contact us. We have dedicated team members ready and knowledgeable around the world who know our products inside-out.



ASIA PACIFIC

108 Pasir Panjang Road
#02-08 Golden Agri Plaza
Singapore, 118535
+65 6870 5000
hpro.apac@harman.com

CENTRAL AMERICA

Calzada Legaria #549, Piso 4, Suite 428
Colonia Diez de Abril, Delegación Miguel Hidalgo
CP11250, Ciudad de México, Mexico
+55 15550322

CHINA

3004 Chong Hing Finance Center
No.288 Nanjing Road (W)
200003, Shanghai, P.R.C
+86 21 2306 0063

EMEA

Westside London Road
Hemel Hempstead
HP3 9TD
United Kingdom
+44 1707668034

INDIA

Prestige Technology Park
4th floor, Jupiter (2A) Block,
Marathahalli Ring Rd
Bangalore, 560103
Karnataka, India
+91 80 43306300
+1 800 208 8880
indiaproinfo@harman.com

Supreme Business Park
B-602, 6th Floor, Hiranandani Gardens,
Powai, Mumbai – 400076,
Maharashtra, India
+91 22 33427385
+1 800 208 8880
indiaproinfo@harman.com

DLF Building
Phase II, 2nd Floor, Tower C,
Gurgaon – 122002, Haryana, India
+91 124 3875139
+1 800 208 8880
indiaproinfo@harman.com

NORTH AMERICA

8500 Balboa Blvd
Northridge, CA 91329
USA
+1 818 893 8411

3000 Research Drive
Richardson, TX 75082
USA
+1 469 624 8000

RUSSIA

ulitsa Dvintsev, 12, korpus 1
Moscow, Russia, 127018
+7 495 221 66 92
audiopro.rus@harman.com

SOUTH AMERICA

Rua Cincinato Braga, 340, conjunto 51
(Delta Plaza building)
Bela Vista, São Paulo, SP
Brazil, 01333-010
+55 11 2699 1199



FOR MORE INFORMATION visit pro.harman.com