

newline

CONNECT. CREATE. COLLABORATE.

FALL/WINTER 2021



We Help You *Make an Impact* In Your Classroom

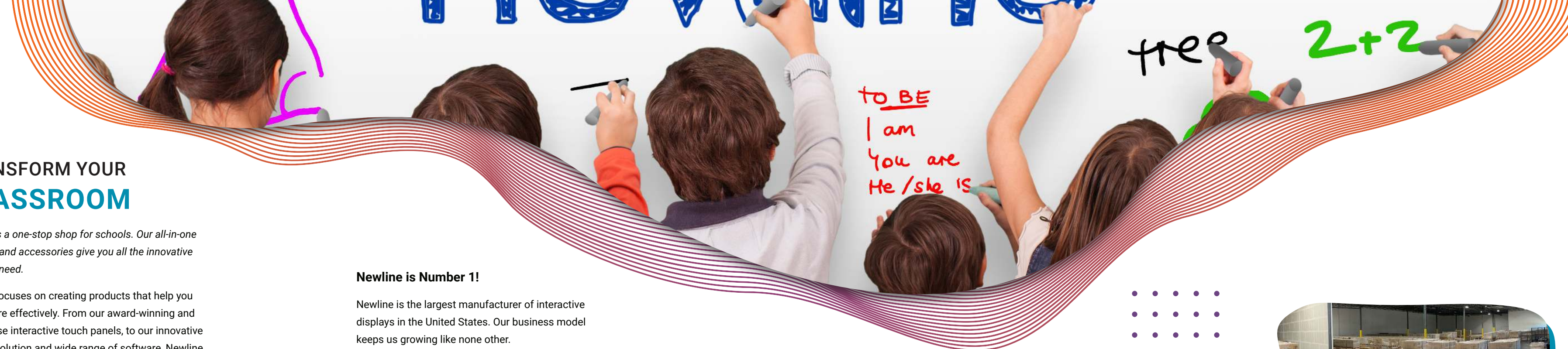
Newline creates the classroom tools of the future. From interactive flat panels that keep students engaged through the lesson, to digital tools that enhance your favorite software, Newline reinvents student engagement and classroom communication in a time of remote and blended learning.

Newline Interactive is an award-winning manufacturer of interactive displays, intuitive software, and other interactive innovations that are easy to use and increase student engagement in the classroom.

We are a leading provider of software and hardware that helps schools find more ways to engage their students, train their teachers, and inspire more active learning.

It is your passion to teach. Newline Interactive gets students excited to learn.





TRANSFORM YOUR CLASSROOM

Newline is a one-stop shop for schools. Our all-in-one solutions and accessories give you all the innovative tools you need.

Newline focuses on creating products that help you teach more effectively. From our award-winning and easy-to-use interactive touch panels, to our innovative desktop solution and wide range of software, Newline has everything you need to make in-person and remote instructions a breeze.

Easy for Anyone to Use

If a solution isn't easy to use, we won't bring it to the market. All of our products are designed with you in mind and it is the key to our success.

Completely Non-Proprietary

We work in your world. No matter what software or hardware you want to use, our solutions give you the freedom to collaborate how you choose.

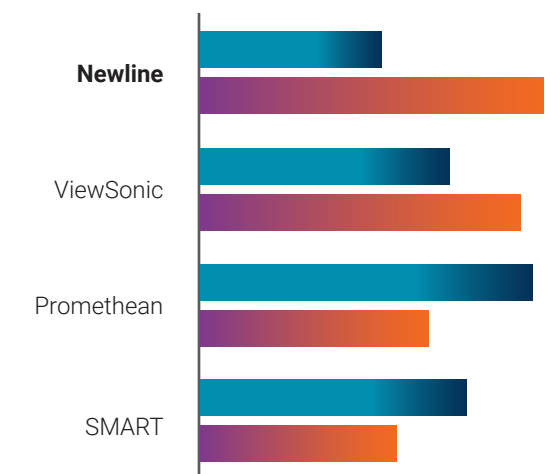
Distance Learning Flexibility

Whether teaching students remotely, in-person, or in a blended learning environment, Newline's solutions help keep your teachers connected to their students.

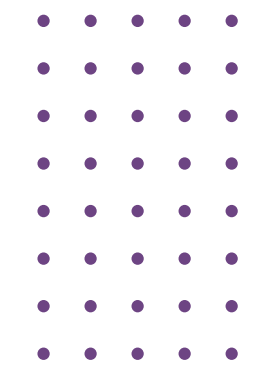
Newline is Number 1!

Newline is the largest manufacturer of interactive displays in the United States. Our business model keeps us growing like none other.

Q3 2020 vs Q3 2021



* Data provided by 2021 Futuresource Consulting Ltd



"We Help Your School Make an Impact"

We Own the Factory

Newline has complete control over product improvements and how much is produced. We listen to our clients and their needs to make sure the products we provide help them succeed.



Well-Stocked Local Warehouses

With warehouses in strategic places across the country, Newline gets displays to their destination faster than ever with same and next day shipping. You'll never have to worry about if Newline can fill an order.

Q Series



Relevant Connectivity

Connect your laptop and other devices with accessible I/O ports including USB-C with power, HDMI, VGA, Wifi 6, Bluetooth, and more.



User Profiles

Customize homescreens by user, class, learning subject, or any other category you can name for your mobile displays or mounted ones.



Embedded Whiteboard

Unlock the most robust whiteboard for all your lessons with the option to even import docs, images, and video!



New to the market! All your lessons and lesson plans became digital and started to include online educational games, but your classroom technology is a little behind, right? Upgrade to the latest from Newline, the Q Series. All new connectivity options and embedded operating system security will have your students engaged again!



4K Ultra-High Definition



Embedded Android 11.0



WiFi 6 Module



Remote Management



Compatible with all Devices



Antimicrobial Coating



Custom User Profiles



Integrated Pen Tray



Bluetooth Compatibility

Product Part Numbers

65" - TT-6521Q

75" - TT-7521Q

86" - TT-8621Q

98" - TT-9821Q

RS+ Series



Collaborate with your students and access your online teaching tools with ease. The RS+ Series helps you connect with and engage students for the ultimate learning experience. All of your favorite teaching tools are at your fingertips. It's remote, hybrid and in-person learning at it's best.



4K Ultra-High Definition



Embedded Android 8.0



Wireless Casting



Remote Management



Compatible with all Devices



Antimicrobial Surface

Protect your students from spreading germs while using the interactive display thanks to the antimicrobial coating on all RS+ Series displays.



App Store

Bookmark your favorite teaching tools by downloading them from the Newline App Store. This curated selection works seamlessly with touch.



Object Recognition

Unintuitive products can slow you down rather than help. The RS+ object recognition makes the writing experience seamless.

Product Part Numbers

65" - TT-6519RS

75" - TT-7519RS

86" - TT-8619RS

NT Series



Advanced Remote Control

Non-touch doesn't mean limited screen control. The provided double-sided remote is equipped with an air mouse and QWERTY keyboard.



Mass Display Management

Save time with pushing out OTA updates, mass notifications, and rotating messages through remote display management.



OPS Computer Enabled

Upgrade your digital screen with an optional OPS on-board computer. Unlock exponentially more functionality when conducting class.



Newline also offers a non-touch display solution for your auditoriums, hallways, and admin offices. Your school runs non-stop and so can your technology. The commercial-grade design allows the NT Series to run continuously 24/7. Ensure the highest quality lessons and digital hallway signage with Newline's NT Series non-touch display.



4K Ultra-High Definition



Bluetooth Capable



OPS Slot



Control by Remote



Compatible with all Devices

Product Part Numbers

65" - EPR7A065NT-000

85" - EPR7A085NT-000

98" - EPR7A098NT-000

FLEX



Project-based and student-led learning is gaining popularity! Add the tools needed to best provide this to your students. Newline FLEX is a versatile all-in-one touch monitor designed to give your students that hands-on learning. Add this to your classroom's project corner, or use it as a teaching aid. Connect with your students virtually from your desk and take notes right on your desktop screen.



27" All-in-One Appliance



Powered USB Type-C w/ 60W



8 Mic Array & Echo Cancellation



Active Pen w/ Palm Rejection



2.1 Channel Speakers

Product Part Numbers

FLEX



Plug & Play Design

BYOD! Plug in your laptop with just one cable and activate touch functionality. Students can start on projects instantly and so can your lessons.



Tilt & Turn 4K Camera

Better illustrate a lesson point with the high-quality camera or use it as a quick document camera.



Capacitive Touch

Accurate P-CAP touch and intuitive response makes it easy to use for small children and adults!

SOFTWARE SOLUTIONS

SOFTWARE TO TRANSFORM HOW YOU TEACH

Newline Interactive software completes the ecosystem and gives teachers more ways to connect with their students and manage the technology.

Built for the modern classroom, these solutions allow you to connect with students no matter where they are. Wirelessly cast mobile screens to the display, broadcast content to everyone's devices, whiteboard and collaborate with students in real-time, apply mass notifications and centrally manage all of the displays on your network.

With Newline as the edtech hub of every classroom, all of your lessons are raised to a higher level of communication and student engagement.



All Newline Software Solutions are compatible with:



CAST



Wireless Screen Sharing

- ✓ Easily share your screen from any device.
- ✓ Newline Cast is simple to use, with one click you can teach wirelessly on any network.
- ✓ Control and annotate your screen from the Newline display or from your own device.
- ✓ Activate moderator mode and cast up to 4 screens simultaneously.

BROADCAST



Content Sharing

- ✓ Tap one button and share your display screen with students who may not be able to see the display clearly.
- ✓ They can follow along on their own personal screen.
- ✓ Writing and page navigation is reflected on all devices.
- ✓ Connect from anywhere, even outside of the display's network.

DISPLAY MANAGEMENT PLUS



Remote Management

- ✓ Centrally manage your Newline interactive displays from any location through a secure and dedicated web portal.
- ✓ Easily manage and deploy learning apps and configure Newline display settings.
- ✓ Quickly update firmware and power usgae across campuses.

CAMERAS

Stay Connected to Your Students

Be distance or hybrid learning-ready in a flash by adding a camera to any Newline display. Complete your Newline ecosystem with the Tango, Meet Cam, or Logitech Meetup. An easy-to-install camera instantly prepares you for your impromptu video lessons, project presentations, or immersive lessons. Save yourself from countless hours of research on “the best edtech camera”. The best options for your Newline display are right here! Discover the perfect fit for your classrooms:



TANGO

- ✓ 1080p HD camera
- ✓ Integrated microphone
- ✓ Connect via USB
- ✓ 120° camera field-of-view
- ✓ Digital noise reduction
- ✓ Works with all Newline displays



1080p Camera



120° Field of View



MEET CAM

- ✓ 4K camera
- ✓ Auto framing
- ✓ 120° camera field-of-view
- ✓ Connect via bluetooth & USB
- ✓ 360° bluetooth microphone - place anywhere in the room
- ✓ Echo cancellation



4K Camera



360° Microphone



LOGITECH

- ✓ 4K camera
- ✓ Motorized pan & tilt
- ✓ 120° camera field-of-view
- ✓ Integrated microphone
- ✓ Echo cancellation
- ✓ Noise suppression
- ✓ Anti-vibration enclosure



4K Camera



Motorized Pan/Tilt/Zoom



ON-BOARD COMPUTERS

Plug & Play Computers for Your Display

Support your campus and classrooms with computers that make teaching easier and learning more engaging. Fill your display's OPS slot with an on-board computer powered by Intel that brings you all the power of a desktop computer. No more worrying about cables or going through the steps of connecting a laptop or desktop directly to the display.



Windows 10 (other OS optional)



8-16GB RAM



Up to 1TB Storage



USB Type-C Connection



Built-in WiFi

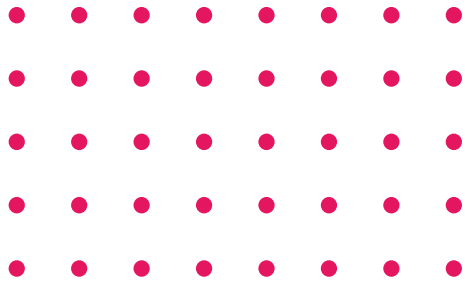


Powered by Intel

	Standard 4K	Good 4K	Better 4K	Best 4K
Part Number	EPR8A65800-000	EPR8A64000-000	EPR8A67160-000	EPR8A64VPU-000
CPU	i5-8265U, 6M Cache, 3.90 GHz	i7-8565U, 8M Cache, 4.60 GHz	ii7-8565U, 8M Cache, 4.60 GHz	i7-7600U - 2.9GHz w/ V Pro
GPU	Intel HD Graphics 620	Intel HD Graphics 620	Intel HD Graphics 620	Intel HD Graphics 620
RAM	8GB	8GB	16GB	8GB
Hard Disk	128GB SATA3 SSD	256GB SATA3 SSD	256GB SATA3 SSD	256GB SATA3 SSD
Built-in WiFi	802.11b/g/n/ac	802.11b/g/n/ac	802.11b/g/n/ac	802.11b/g/n/ac
OS	Win 10 Pro 64bit (other OS optional)	Win 10 Pro 64bit (other OS optional)	Win 10 Pro 64bit (other OS optional)	Win 10 Pro 64bit (other OS optional)
RAM Upgrades	Up to 16GB	Up to 16GB	n/a	Up to 16GB
Storage Upgrades	Up to 1TB SSD	Up to 1TB SSD	Up to 1TB SSD	Up to 1TB SSD

ACCESSORIES

Your schools are made up of more than just classrooms. There are also offices, libraries, and speciality rooms that can benefit from interactive displays. Support all the needs on your school campuses with reliable accessories that support Newline's innovative designs. Mount your panel to a wall or choose a more mobile mounting solution.



Newline partners with a variety of different mobile stand and wall mount providers to help you find the best fit for your needs.

newline Wall Mount

- ✓ Keep your display sturdy on the wall with the standard Newline wall mount.
- ✓ The light, compact design makes it easy to install while providing strength and durability.



SKU: EPR8A88700-000
*Fits 55" - 80" Panels

*Fits 80" - 98" Panels
SKU: EPR8A88900-000

newline Mobile Stand

- ✓ Adjust the height of your display so that your students can touch and interact directly with the screen.



*Fits all Panel Sizes
SKU: EPR8A50500-SQR*

newline TRULIFT Mobile Stand

- ✓ Motorized stands let you adjust your display height with a remote or electronic option, giving you easy visibility.



*Fits all Panel Sizes
SKU: EPR8A60060-000*

BalanceBox® Wall Mount

- ✓ Move the display up and down with its effortless high-low adjustment. Easily mount your display to the front of the classroom and keep it locked in place for daily use.



SKU: EPR8A88700-000
*Fits 55" - 80" Panels

SKU: EPR8A88900-000
*Fits 80" - 98" Panels

MOORECO™ iTeach Stand

- ✓ With a robust mobile stand, move your display around your classroom or campus with ease.



SKU: EPR8A70080-000*
*Fits all Panel Sizes

MOORECO™ iTeach Motorized Stand

- ✓ Control the height of the display on a motorized mobile stand with a convenient electronic lift option.



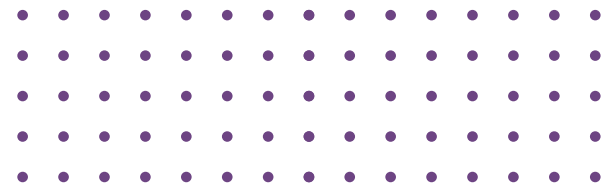
SKU: EPR8A70070-000*
*Fits all Panel Sizes

BalanceBox® Mobile Stand

- ✓ This mobile stand's compact design lets you move your interactive display up and down with just your fingertips.



SKU: EPR8A88555-000°
SKU: EPR8A88666-000†



OUR SERVICE GUARANTEE

Newline's commitment to quality service and your school's success extends past the initial purchase. We provide lifetime service, free training, and world-class technical support as well as a best-in-class warranty.



On Demand Technical Support

Newline provides continuous U.S. based technical phone support, email support through our Helpdesk Ticket System, and remote desktop support. You will always have access to answers at our online support knowledgebase. Proactively find answers, any time, with our completely comprehensive self-help system.



Advanced Replacement Warranty

Newline has one of the best warranty programs in the industry. Not only do we provide 3-years of coverage, but it is an all inclusive advanced replacement warranty. That way your progress and productivity is not affected by technology defects.



Training Geared for Ease of Use

Protect your technology investment through free training for all teachers and staff. Newline provides quality instructional training opportunities for all staff. The easier our display is for your team to use effectively, the more you can succeed. Newline's resources also include custom training emails to staff, PD training, and more.

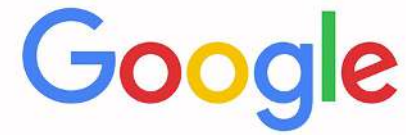


On Demand Training

Want to give your staff the flexibility they need for training? Newline offers on demand training for all of our customers. Each user gets their own account and may choose which content they want to learn. Our videos are no longer than 5 minutes each.

OUR PARTNERSHIPS

Newline is committed to providing the best user experience possible, which includes partnering with the best technology companies. We are proud to sell innovative products that incorporate their expertise to make interactivity easier than ever!



A Bundle for the Virtual World

Google and Newline worked together to create the Newline Chromebox A10, a Google-powered panel accessory.



Powerful On-Board Computers

Our OPS On-Board Computers come with powerful Intel processors, providing customers with an all-in-one computing solution.



A Bundle for the Virtual World

Microsoft Windows Whiteboard leverages the power of touch to bring lessons and whiteboarding sessions to life.



Logitech provides camera and microphone options that easily integrate with all of Newline's touch solutions.



Newline and Crestron have teamed up to bring you the complete solution for your interactive display. Crestron's NVX series pairs well with Newline's IP series displays. In fact, it's Crestron NVX certified!



Clickshare is an agnostic meeting solution for starting video calls from your laptop, working with all UC clients, and instantly connects to RS+ Series panels.



Adjust your Newline display with BalanceBox's options for wall mounts and mobile stands, some even motorized.



The versatile, configurable and durable Anywhere Cart mobile stands provide high quality classroom solutions. Fits up to 86" Newline displays.



Enhance your Newline interactive touch display with a versatile Mooreco mobile cart solution to provide you mobility.



Provide financing solutions to your Newline customers through TEQlease, giving additional purchasing options.



FlatFrog's InGlass Technology powers several of Newline displays for a seamless and natural writing experience.



Keep your Newline displays safe with Jelco's padded display covers. Jelco is an established market leader and develops a wide variety of industry first products.



Free your Newline display from the wall by putting it on one of Conen's several mobile stand options.



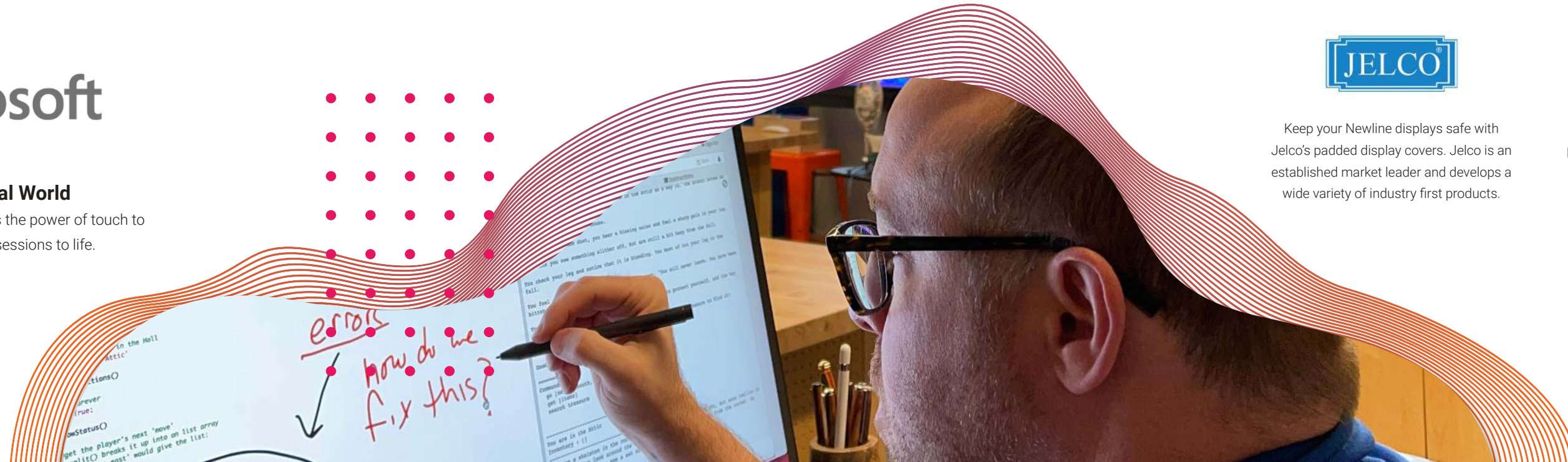
Find a great, stylish AV setup with Salamander, who create a variety of mounting solutions to hold your display.



Peerless-AV provides industry leading fixed mount and mobile stand solutions designed to improve your Newline experience.



T1V provides a hardware wireless casting solution, along with other multi-touch applications that work with Newline displays.



FROM OUR CUSTOMERS



David Flynn

Macon County School System

"Newline's products are engaging our students in classrooms across the Diocese and our teachers love them for their ease-of-use. We also value the level of tech support and onsite training Newline provides whenever we need it."



Cynthia Herndon

Roman Catholic Diocese of Dallas

"We chose Newline after trying out a couple options. As a G Suite district and invested in Chromebooks, Newline was a clear winning choice. The Chrome compatibility, advanced features, and their support have made this a real winner for the classrooms in our district."



Ed Kemnitzer

East Williston School District

"Newline has enabled us to provide a seamless experience to kids without interference. The panels are not in the way, they are part of the process. All of our teachers have found their niche and love how easy it is to use the panel."



Karina Garcia

St Bernard of Clarivaux Catholic School

"Our Newline interactive flat panels are very easy to use and that means more teachers and students are really using them! We are so pleased that we have these tools in our classrooms!"



Nicholas Provenzano

The Nerdy Teacher

"Flex was something I didn't know I needed. The inability to draw and annotate digitally is a consistent pain point for a lot of educators. Flex makes clean communication possible in annotation which is what you're looking for especially in a design class which is all about 'hey you wanna move this here', 'you know what about this', or 'change this'. That's huge."

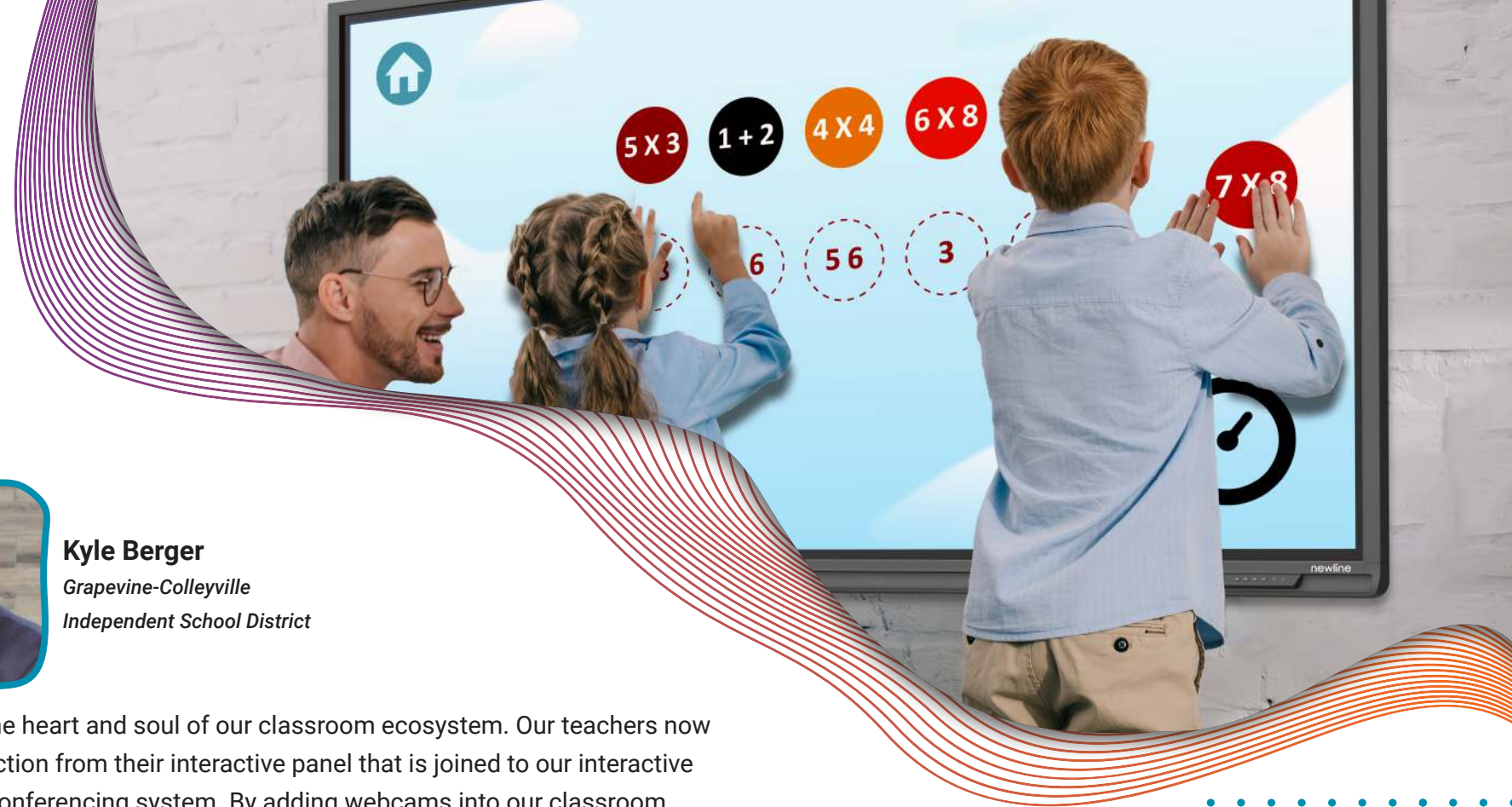
"Adding a Flex to my Makerspace has allowed me to take digital design and creation to the next level. Giving students access to tools like this prepares them for the next level of their learning."



Kyle Berger

Grapevine-Colleyville Independent School District

"Newline is the heart and soul of our classroom ecosystem. Our teachers now deliver instruction from their interactive panel that is joined to our interactive online videoconferencing system. By adding webcams into our classroom, they can now teach the students in-person and at home at the exact same time all within the ecosystem that they were presenting in normally."



Proudly Serving Districts Coast to Coast



and thousands more!

OUR AWARDS

Each year, Newline shatters it's goals and gets recognized for it. Trust a brand that consistently receives accolades from industry experts on innovatie design, relevant product features, and company growth.

		 Entrepreneur of the Year Finalists	 InfoComm 2015 Hot 50 Product	 CBS Eye on Technology Appearance	2015	
 Best New Interactive Flat Panel - ISE	 InfoComm 2016 Best in Show	 Entrepreneur of the Year Finalists	 Best Office Technology Product Finalist	 #1 Fast Tech Company	 AV Awards 2016 Finalist	2016
 InfoComm 2017 Best in Show	 Entrepreneur of the Year Finalists	 AV Awards 2017 Finalist	 Top 5 Fast Tech Companies	 #10 of the Dallas 100	 Ranked #149 in 2017 Inc. 500	2017
 AV Awards 2018 Finalist	 Top 5 Fast Tech Companies	 Ranked #293 in 2018 Inc. 500	 #6 of the Dallas 100	 Ranked #81 of the Deloitte Fast 500	2018	




Stability

With a steady three-year financial revenue growth, you don't have to worry that the company you're working with will go out of business anytime soon. They'll be able to continue honoring warranties and providing you service for years to come.



Security

A proven track record of success means you don't have to worry about receiving anything less than the best. An Inc. 500 ranked company will make sure you are taken care of and satisfied.

2019	 TCEA 2019 Best of Show	 2019 Partner of the Year Intel IoT Solutions Alliance Partner of the Year	 Entrepreneur of the Year Finalists	 EdTech Cool Tool Awards Finalist	 #377 Growjo Fastest Growing TX Companies	 Ranked #406 in 2019 Inc. 500	 Ranked #114 of the Deloitte Fast 500
2020	 Ranked #1088 in 2020 Inc. 5000	 Ranked #18 in the Dallas Middle Market 50	 Ranked #266 of the Deloitte Fast 500	 #15 of the Dallas 100	 AV Awards 2020 Finalist		
2021	 iF Design Award 2021	 EdTech Cool Tool Awards Finalist	 Red Dot Award Product Design 2021	 Ranked #1963 in 2021 Inc. 5000	 Best Innovation for the Post-COVID Workspace	 Ranked #480 of the Deloitte Fast 500	



newline

CONNECT. CREATE. **COLLABORATE.**

950 W Bethany Drive

Suite 330

Allen, TX 75013

sales@newline-interactive.com

www.newline-interactive.com